

## EDX100 Fast Ethernet Converter



### Introduction

The Fast-Ethernet converter family EDX100 offers an economical copper to fibre optic signal conversion.

Fibre optic connections allow long-haul as well as short-haul distance Ethernet-links to spread connectivity into a wide area. Different optical variants are available to fit best in all scenarios. By using the single-fibre option (WDM-mode) a very cost-effective transport of Fast-Ethernet traffic can be achieved.

The Ethernet bridge - media converter EDX100 has Link Fault Pass-through (LFP) functionality, which allows easy tracing of network link failures. In case of signal loss of fibre optic port, an alarm-output is triggered for external use.

EDX100 can be housed in small footprint single-slot housing or 19" rack.

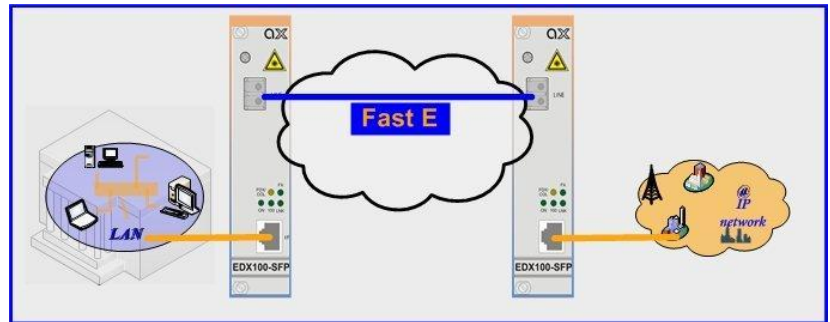
### Features

- ▶ Fast Ethernet converter: 10/100BaseT to 100BaseFX
- ▶ Compact design
- ▶ Support of Jumbo-Frames
- ▶ Link Pass Through for failure detection
- ▶ Different FO options
- ▶ Version for pluggable SFP modules (line)
- ▶ Compact 3RU rack mount card
- ▶ Available together with SHX3 for Desktop version

## EDX100 Fast Ethernet Converter

### Application Example

The EDX100 can be used to bridge long or short distances, thus enhancing copper Ethernet networks by using a fibre optic line between branch offices or to achieve FE-rollout for customers.



### Specifications

#### Network I/F (WAN)

- 1x 100BaseFX, for all variants
- Different optical characters available:
- EDX100-SFP:
  - Pluggable SFP modules
  - Connector: SFP

#### Service I/F (LAN)

- 1x 10/100BaseT
  - IEC 60870-5-104
  - Auto Negotiation, Auto MDIX
  - Connector: RJ45

#### Features

- Link Pass Through Capability
- Easy Configuration via DIP-switches
- Plug-n-Play installation
- Low power consumption
- Support of Jumbo Frames MTU: 1600 Bytes
- Support of VLAN-tagged traffic
- LEDs on front to indicate status

#### Environmental

- Operating: +5 to +40°C (ETS300019-1-3; class3.1)
- Transport: -25 to +70°C (ETS300019-1-2; class2.2)
- Storage: -25 to +55°C (ETS300019-1-1; class1.2)
- Humidity: 10 to 90%, non-condensing
- Safety-Norm: acc. to EN60950
- Emission: EN55022 class B

#### Power

- Supply Voltage: +5 VDC (4,8 to 5,2 V) via Backplane
- Power Consumption: < 5 VA, over current protected
- Power supply via system rack SRX or housing SHX

#### Physical

- Weight: < 200g
- Dimensions:
  - 130mm H x 30mm W x 190mm D
  - 45mm H x 145mm W x 260mm D (in SHX3)
- 19" rack: 10 slots available in 3RU rack

Specification may change without prior notice. Please refer to [www.arcutronix.com](http://www.arcutronix.com) for latest data-sheets.

For more information please contact arcutronix GmbH or visit us at [www.arcutronix.com](http://www.arcutronix.com).

Version 03/11 © 2011 arcutronix GmbH