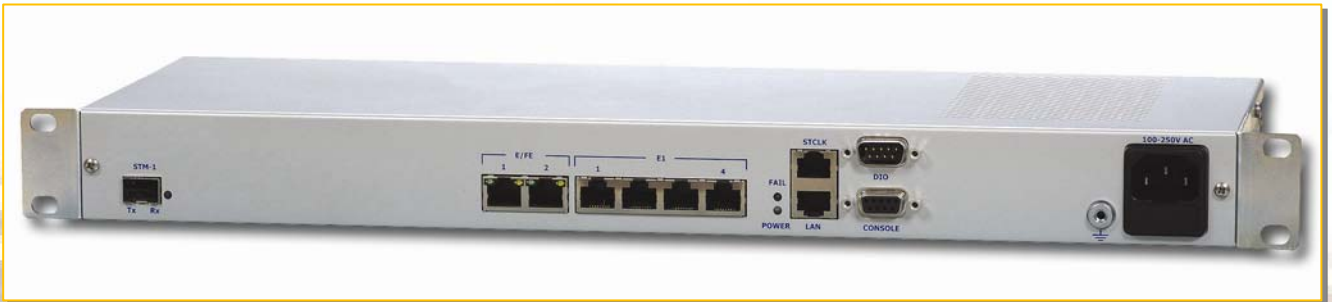


SMX155 SDH Service Multiplexer



Introduction

arcutronix SMX155, the next-generation SDH Access Device, enables true multi-service carrier-grade access network solutions for tomorrow's converged networks. The cost-effective STM-1 terminal multiplexer integrates voice, leased line and packet transport on a compact platform. The system is designed for customer premises access as well as metro aggregation networks, furthermore it is very well suited as a transport device in the wireless infrastructure. The SMX155 is optimized to provide unparalleled density and small size at low cost.

The SMX155 protects the investments made in the installed SDH network and improves the operator's TDM services and revenue through its higher integration and lower cost solution. In addition, the system supports effective Ethernet transport over the existing network without the need for costly deployment of an overlay network.

Management of the unit is easily integrated in an existing network management solution. The system provides an Ethernet management port for on-site craft maintenance. The SMX155 provides SNMP alarm traps as well as web-browser based provisioning.

Features

- ▶ SDH interfaces: STM-1 interface enabling SDH carrier class transport.
- ▶ Access interfaces: E1 and Fast Ethernet
- ▶ Hot-pluggable SFP module for flexible reach selection.
- ▶ Standards compliant Ethernet mapping via GFP, Virtual Concatenation and LCAS for Ethernet private line.
- ▶ Intuitive web-browser based user interface.
- ▶ Compact design measuring only 1RU high, 19" wide.
- ▶ Low power and low cost.
- ▶ Highly integrated architecture with all functions combined on a single low-cost box
- ▶ Optimal bandwidth utilization and flexibility is guaranteed by data mapping using GFP, Virtual Concatenation and LCAS.
- ▶ MTU: 5480 Bytes

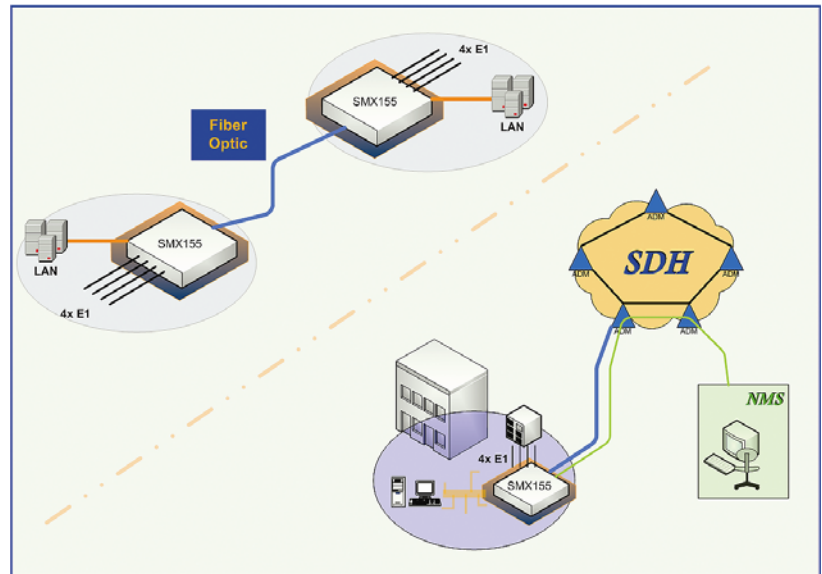
SMX155

SDH Service Multiplexer

Application Examples

SMX155 can be used in a pure P2P fibre optic scenario or as tributary unit in a SDH-network. Due to its standard conform mapping of payload, real ADM functionality is supported and the traffic can be transported herein.

SMX155 as standalone Fibre-Optic multiplexer offers easy installation for multi-service application.



Specifications

Network I/F

- 1 x STM-1 acc. ITU-T G.707, G.793, G.803
- Bit rate: 155,52 Mbit/s
- Pluggable SFP module
 - All STM-1 SFP modules supported
 - Copper SFP STM-1e available

Service I/F (user)

- 4 x ITU-T G.703
 - Bit rate: 2.048Mbps ± 50ppm
 - Line code: HDB3
 - Impedance: 75Ω unbalanced / 120Ω balanced
 - Jitter: ITU-T G.742, G.823 compliant
 - Connector: RJ45
- 2 x 10/100BaseT
 - Auto negotiation
 - Auto MDIX
 - Connector: RJ45
- Ethernet mapping
 - GFP-F encapsulation
 - Virtual Concatenation VC3-xv (1..2) or VC12-xv (1..46)
 - LCAS

Management

- Ethernet 10/100BaseT for local management access
- Console port (RS232)
- SNMP traps for alarming
- Web-browser based provisioning
- TCP/IP and PPP over dedicated VC12 for remote management access
- OSPF routing for remote management access

Environmental

- Operating conditions: ETS 300 019, class3.1E
- Transport conditions: ETS 300 019, class2.3
- Storage conditions: ETS 300 019, class1.2
- Free convection cooling without the need for fans

Power

- Consumption: <15VA
- Input:
 - 110-230 VAC or
 - Redundant 48/60 VDC

Physical

- Standalone (19"):
 - Weight: 1,5 kg
 - Dimensions: 440 (W)×43.5 (H)×150 (D) mm
 - Form Factor: EIA 19", 1RU

Specification may change without prior notice. Please refer to www.arcutronix.com for latest data-sheets.

For more information please contact arcutronix GmbH or visit us at www.arcutronix.com.

Version 03/11 © 2011 arcutronix GmbH